

# The East Metro: An Economic Overview

Rachel Hillman

Regional Labor Market Analyst

MN Dept. of Employment & Economic Development

St. Paul WorkForce Center



Analysis & Evaluation Office    Communication, Analysis & Research Division    MN Department of Employment & Economic Development

## The East Metro Economy

### East Metro 2007:

- 32,730 establishments
- 534,380 employment

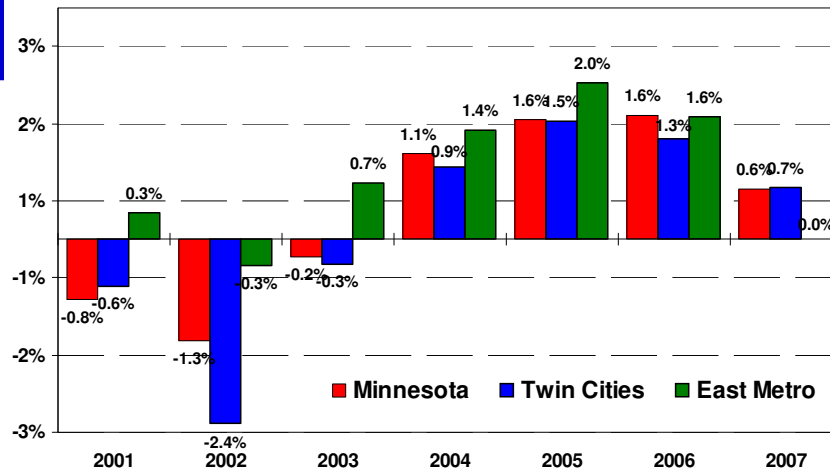
### Compared to Twin Cities:

- 40% of establishments
- 37% of employment

	Establishments, 2007	Private Sector Employment, 2007	Average Weekly Wage, 2007
Dakota County	10,202	156,711	\$819
Ramsey County	14,170	280,144	\$926
Scott County	3,001	33,423	\$757
Washington County	5,358	64,105	\$731

Analysis & Evaluation Office    Communication, Analysis & Research Division    MN Department of Employment & Economic Development

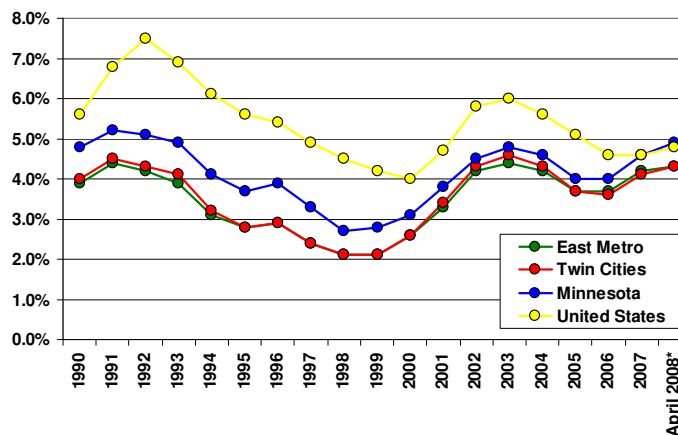
## Average Annual Employment Growth



Source: MN Dept of Employment & Economic Development

Analysis & Evaluation Office    Communication, Analysis & Research Division    MN Department of Employment & Economic Development

## Annual Unemployment Rates



\*Monthly rate not seasonally adjusted

Source: MN Dept of Employment & Economic Development

Analysis & Evaluation Office    Communication, Analysis & Research Division    MN Department of Employment & Economic Development

## Change in Private Industry Employment

Industry	2001 Employ.	2007 Employ.	Employ. Change 2001-2007	Percent Change 2001-2007 (w/Twin Cities Comparison)
<b>Total, All Industries</b>	506,389	534,383	27,994	5.5% 1.7%
<b><i>Goods-Producing Domain</i></b>	107,100	96,724	-10,376	-9.7% -10.6%
Natural Resources & Mining	2,024	NA	NA	7.9%
Construction	30,857	NA	NA	-8.2%
Manufacturing	74,217	64,346	-9,871	-13.3% -11.8%
<b><i>Service-Providing Domain</i></b>	399,292	437,656	38,364	9.6% 4.8%
Trade, Transp. & Utilities	116,423	121,005	4,582	-3.8% 3.9%
Information	20,953	18,378	-2,575	-12.3% -19.0%
Financial Activities	37,617	42,215	4,598	12.2% 5.0%
Professional & Business Services	76,906	80,681	3,775	4.9% 2.7%
Education & Health Services	68,928	91,014	22,086	32.0% 28.8%
Leisure & Hospitality	54,973	61,718	6,745	8.3% 10.6%
Other Services	23,489	22,631	-858	-3.7% -3.3%

Source: MN Dept of Employment & Economic Development

■ East Metro ■ Twin Cities

## Today's East Metro Job and Wage Comparison (with Twin Cities comparison in parenthesis)

Industry (Private Sector)	Current Employment Distribution	Total Annual Payroll	Payroll Distribution*
<b><i>Goods-Producing Domain</i></b>	<b>18.1%</b> (17.7%)	<b>\$ 5.7 Billion</b>	<b>23.8%</b> (20.7%)
Natural Resources & Mining	0.3% (0.2%)	\$ 60 Million	0.3% (0.1%)
Construction	5.1% (4.7%)	\$ 948 Million	6.3% (5.2%)
Manufacturing	12.0% (12.8%)	\$ 3.9 Billion	16.4% (15.3%)
<b><i>Service-Providing Domain</i></b>	<b>81.9%</b> (82.3%)	<b>\$ 18.2 Billion</b>	<b>76.2%</b> (79.3%)
Trade, Transportation & Utilities	22.6% (21.7%)	\$ 4.5 Billion	18.8% (18.2%)
Information	3.4% (2.9%)	\$ 1.2 Billion	5.0% (3.8%)
Financial Activities	7.9% (9.5%)	\$ 2.5 Billion	10.4% (14.6%)
Professional & Business Services	15.1% (18.1%)	\$ 4.8 Billion	20.2% (23.6%)
Education & Health Services	17.0% (15.7%)	\$ 3.6 Billion	15.1% (13.1%)
Leisure & Hospitality	11.5% (10.5%)	\$ 989 Million	4.1% (3.8%)
Other Services	4.2% (3.8%)	\$ 623 Million	2.6% (2.2%)
<b>Total, All Industries</b>	<b>100.0%</b>	<b>\$ 23.9 Billion</b>	<b>100.0%</b>

2007 data are presented

Source: MN Dept of Employment & Economic Development

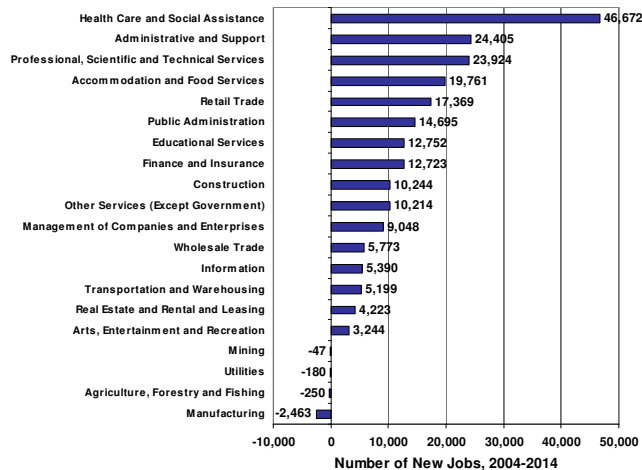
Analysis & Evaluation Office    Communication, Analysis & Research Division    MN Department of Employment & Economic Development

## Twin Cities Employment Projections

- In the Twin Cities region, we project that 225,000 new jobs will be created between 2004 and 2014 – this is a 13% growth rate.
- Another 402,000 new work force entrants will be needed to replace workers who have retired or otherwise left their position.
- More than one-fourth of the new jobs will be in either the educational or health services field.
- Post-secondary education will be required for 15 of the top 20 fastest growing jobs in the Twin Cities.
  - 16 of the top 20 occupations have average wages of greater than \$20/hour.

Analysis & Evaluation Office    Communication, Analysis & Research Division    MN Department of Employment & Economic Development

## Health care will add the most new jobs in the Twin Cities.



Source: MN Dept of Employment & Economic Development

Analysis & Evaluation Office    Communication, Analysis & Research Division    MN Department of Employment & Economic Development

## Occupation growth in the Twin Cities, 2004 to 2014

### Fastest growing occupations

- Network Systems and Data Communication Analysts
- Home Health Aides
- Personal and Home Care Aides
- Physician Assistants
- Computer Software Engineers, Applications & Systems Software
- Biomedical Engineers
- Hazardous Materials Removal Workers
- Medical Assistants Dental Hygienists
- Dental Assistants
- Community and Social Service Specialists
- Medical Scientists
- Database Administrators
- Biochemists and Biophysicists
- Environmental Engineers
- Network and Computer Systems Administrators
- Social and Human Services Assistants

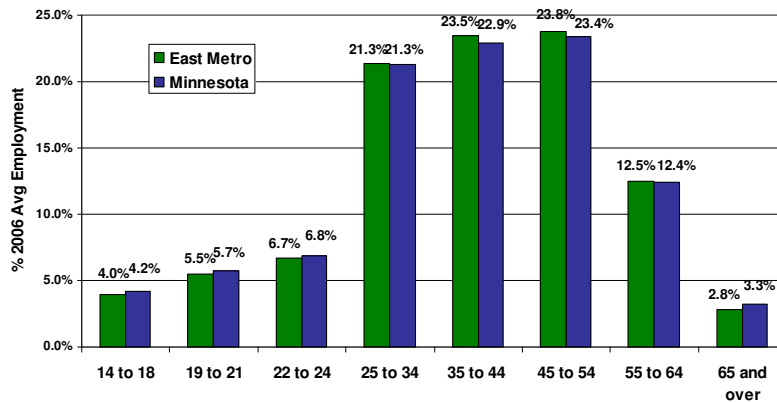
### Occupations adding the most jobs

- Retail Salespersons
- Registered Nurses
- Combined Food Preparation and Serving Workers
- Personal and Home Care Aides
- Computer Software Engineers, Applications & Systems Software
- Customer Service Representatives
- Home Health Aides
- Janitors and Cleaners
- Accountants and Auditors
- Office Clerks, General
- Sales Representatives, Wholesale and Manufacturing
- Executive Secretaries and Administrative Assistants
- Truck Drivers, Heavy and Tractor-Trailer
- Social and Human Services Assistants
- Computer Systems Analysis
- Carpenters

Source: MN Dept of Employment & Economic Development

Analysis & Evaluation Office    Communication, Analysis & Research Division    MN Department of Employment & Economic Development

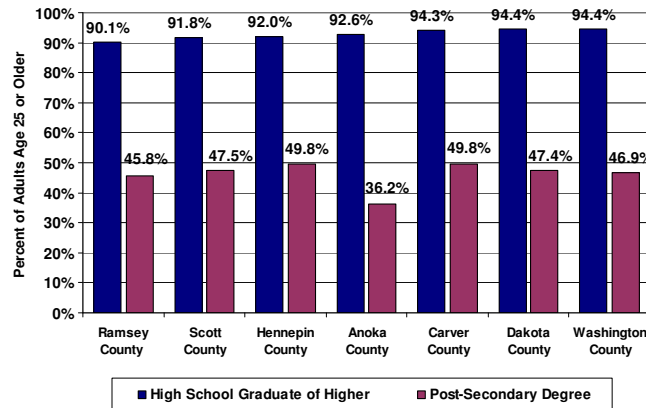
## Age Range of Workers, 2006



Source: U.S. Census Bureau, Local Employment Dynamics

Analysis & Evaluation Office    Communication, Analysis & Research Division    MN Department of Employment & Economic Development

## Educational Attainment



Data presented are for adults 25 years of age and over.

Source: U.S. Census Bureau, American Community Survey, 2006

Analysis & Evaluation Office    Communication, Analysis & Research Division    MN Department of Employment & Economic Development

## Minnesota-produced Labor Market Information is online at:

[www.deed.state.mn.us/lmi](http://www.deed.state.mn.us/lmi)

**Rachel Hillman**

Regional Labor Market Analyst

Phone: 651.642.0728

E-mail: [rachel.hillman@state.mn.us](mailto:rachel.hillman@state.mn.us)

Analysis & Evaluation Office    Communication, Analysis & Research Division    MN Department of Employment & Economic Development